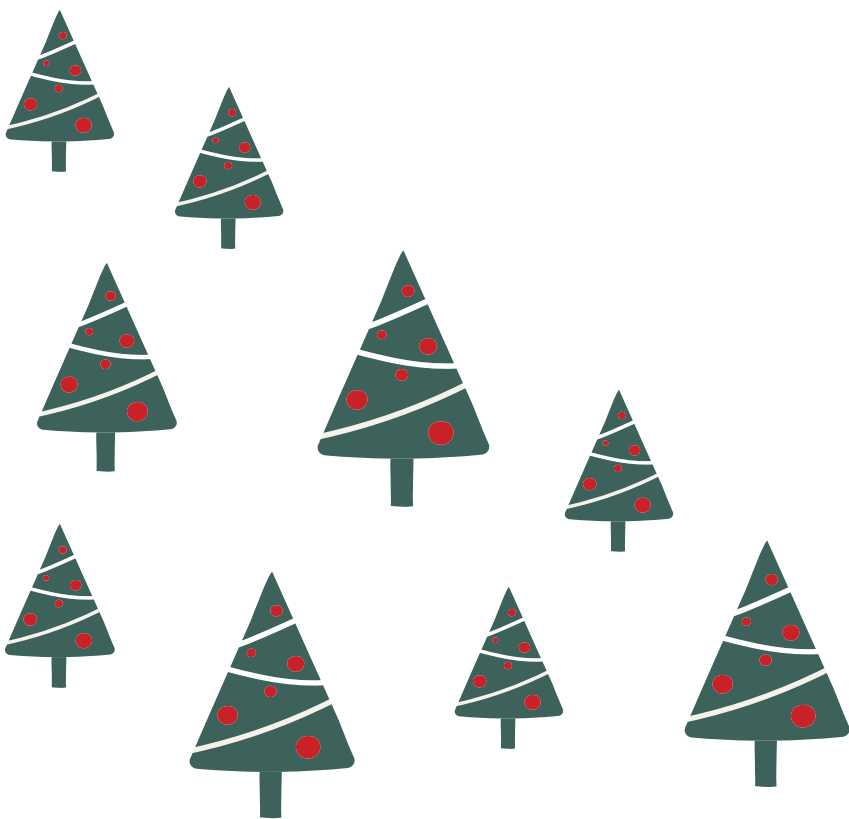




NATALE 2019

PACKAGING & PAPER
POOL  PACK®
BY GROSSI GROUP



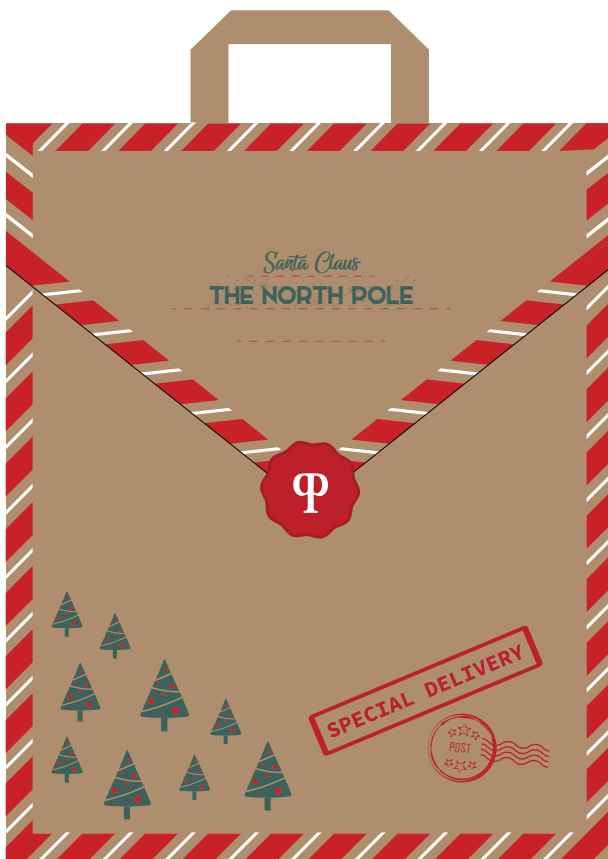
SHOPPER IN CARTA MOD. JAPA CON MANICO RITORTO BIANCO

gr.120 f.to cm. 32+20x32
Certificata FSC

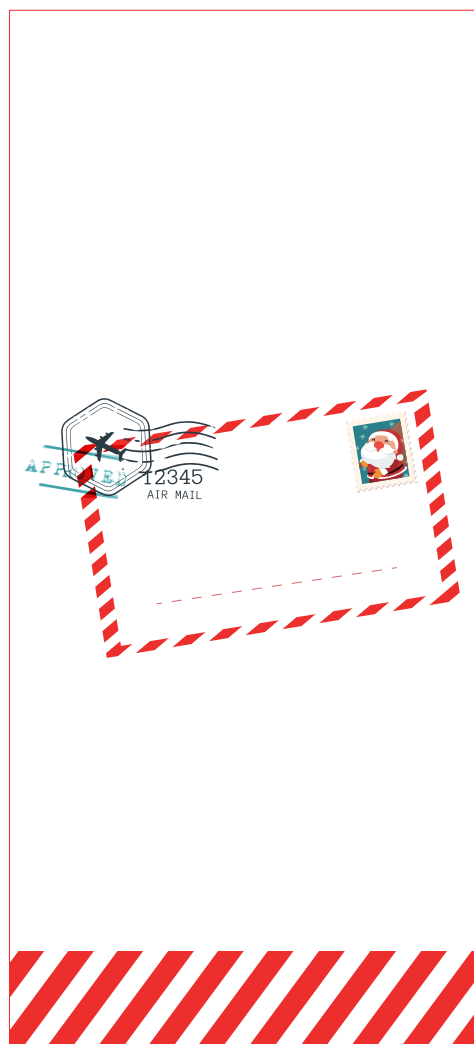


SHOPPER IN CARTA MOD. DUPLEX AVANA

PORTATA 10 KG
gr.115 f.to cm. 32+16,5x39
Certificata FSC



SACCHETTO IN CARTA
KRAFT BIANCO
Certificato FSC

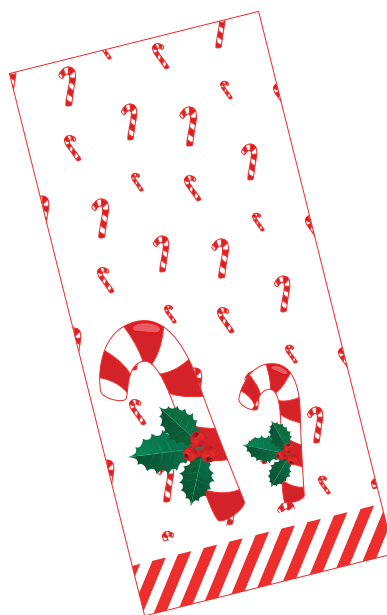


Retro del sacchetto con spazio cliente

SACCHETTI IN CARTA KRAFT BIANCO Certificati FSC



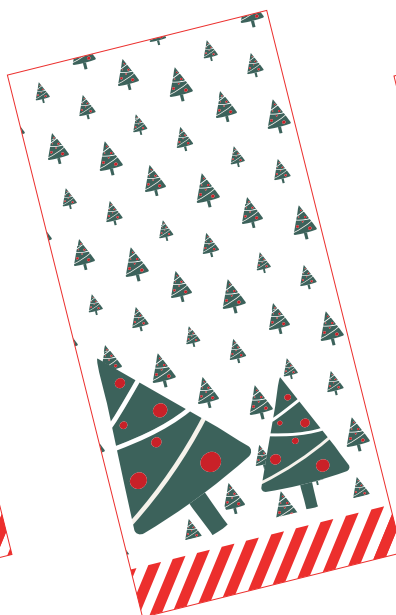
Sacchetto cm. 15x33



Sacchetto cm. 17x37



Sacchetto cm. 20x42



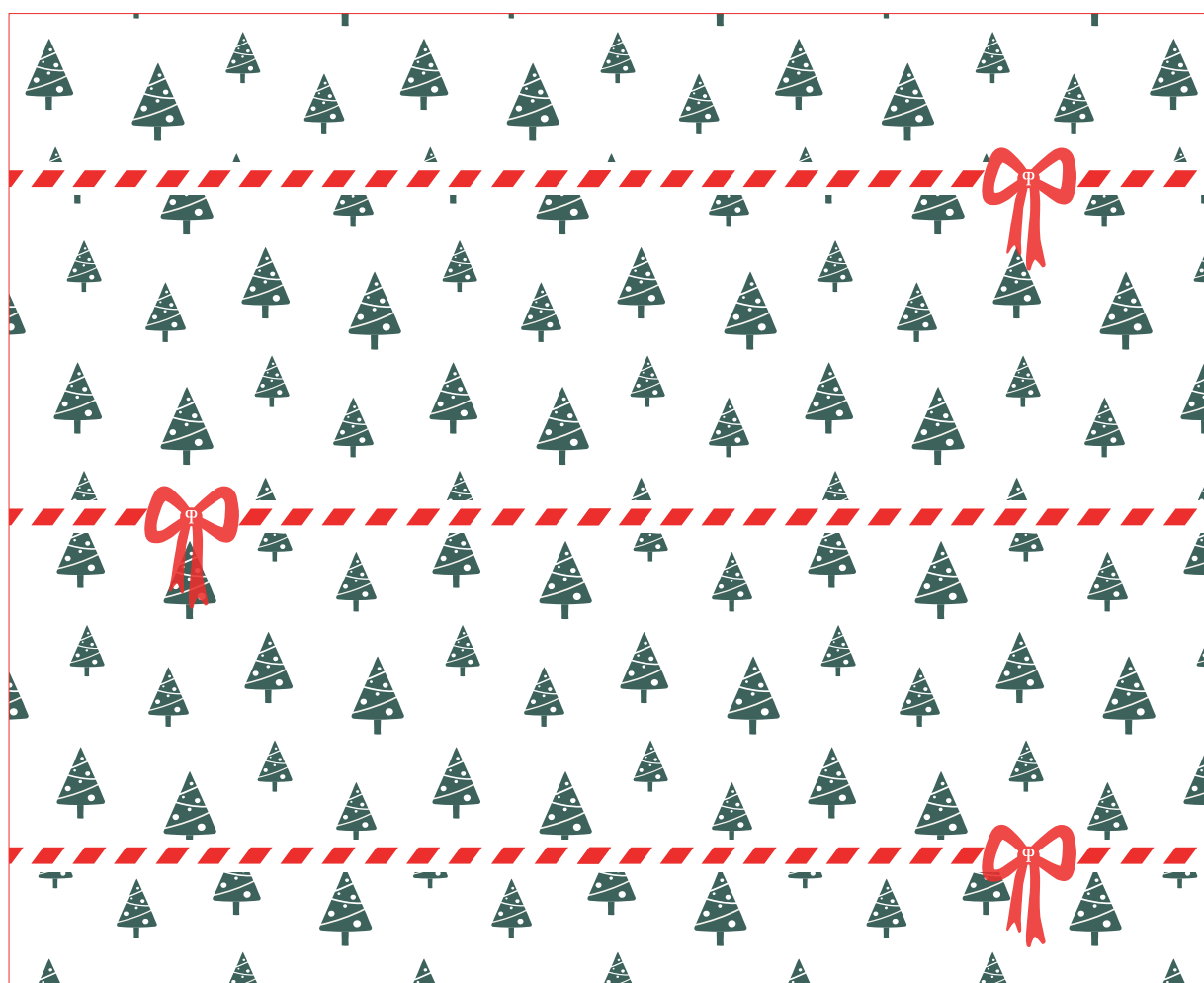
Sacchetto cm. 22x46



Sacchetto cm. 25x52

CARTA ACCOPPIATA

gr. 35+10 Mater-bi | Bioplastica biodegradabile e compostabile
f.to cm. 25x37 - cm. 33x40 - cm. 37x50



CARTA POLITENATA

f.to cm. 25x37 - cm. 33x40 - cm. 37x50 - cm. 40x66



SHOPPER BIO

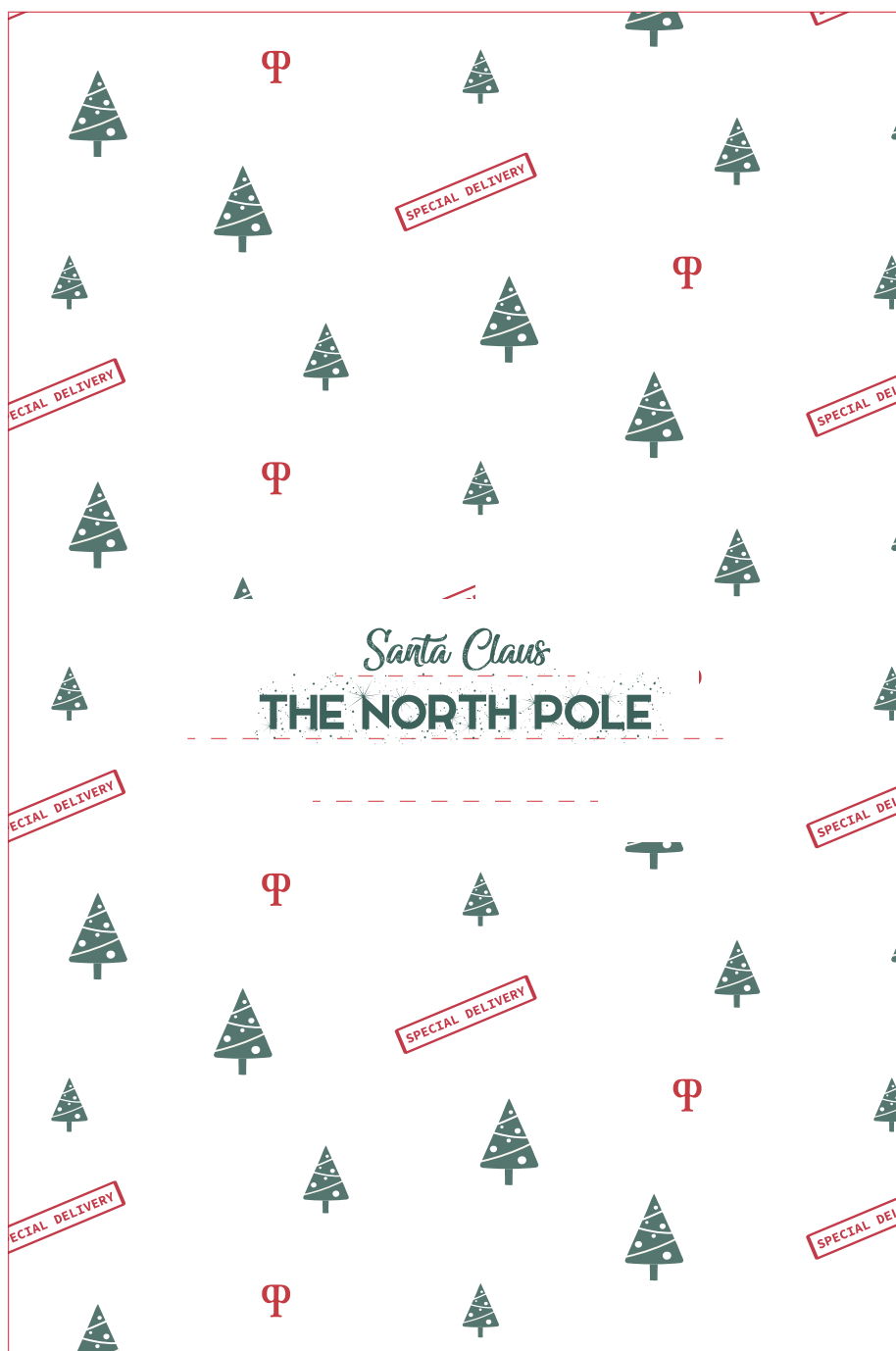
BIODEGRADABILE e COMPOSTABILE

f.to cm. 27X50 - cm. 30X60
Certificate TÜV AUSTRIA



BY OVTENE
L'INCARTO CON LE ALI BREVETTATO PER AFFETTATI

f.to cm. 24x36 - cm. 28x40



SACCHETTI IN CARTA ANTIGRASSO KRAFT BIANCO ANTIGRASSO

f.to cm. 13x33 - cm. 15x30 - cm. 21x35

Certificati Pefc



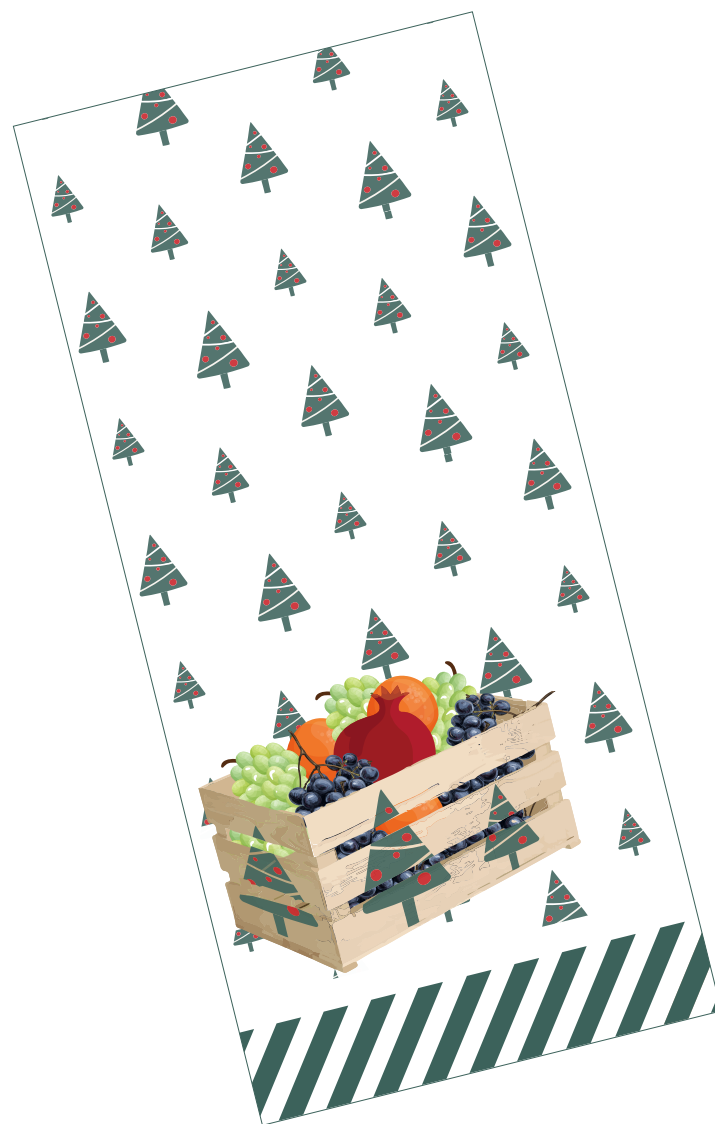
SACCHETTI FRUTTA E VERDURA KRAFT BIANCO RESISTENTE ALL'UMIDO

f.to cm. 15x30 - cm. 17x37

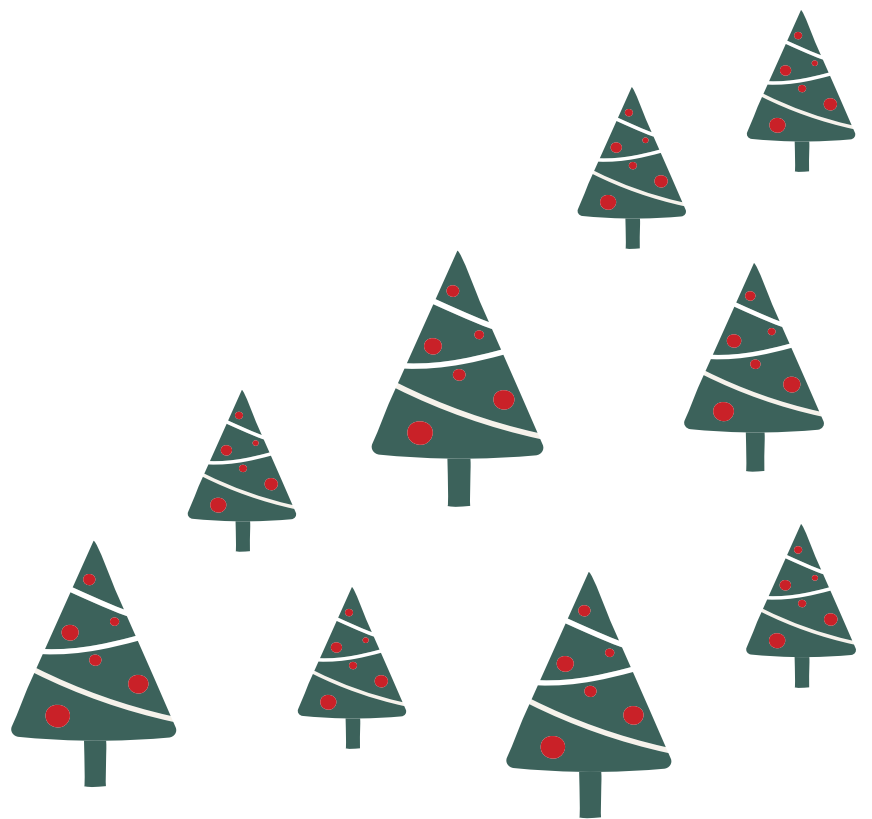
Certificati FSC



Sacchetto cm. 15x30



Sacchetto cm. 17x37





Grossi

GROSSI CARTA MANTOVA S.P.A. - SOCIO UNICO

46100 MANTOVA - VIA OSTIGLIA 10/F - TEL. 0376 2381 - P. IVA E COD. FISC. 00287670202

www.grossicarta.com



Grossi carta Mantova spa

info@grossicarta.com